



US0D1111307S

(12) **United States Design Patent**
Graham

(10) **Patent No.:** **US D1,111,307 S**

(45) **Date of Patent:** **** Feb. 10, 2026**

(54) **SNOWSUIT**

(71) Applicant: **Rachel Graham**, La Grange Park, IL
(US)

(72) Inventor: **Rachel Graham**, La Grange Park, IL
(US)

(**) Term: **15 Years**

(21) Appl. No.: **29/926,659**

(22) Filed: **Jan. 31, 2024**

(51) **LOC (15) Cl.** **02-02**

(52) **U.S. Cl.**
USPC **D2/745**

(58) **Field of Classification Search**
USPC D2/743, 744, 745
CPC A41B 13/00; A41B 13/005; A41B 13/06;
A41D 11/00; A41D 13/02
See application file for complete search history.

(56) **References Cited**

U.S. PATENT DOCUMENTS

2,615,165	A *	10/1952	Steedman	A41D 13/02
					2/82
D843,687	S *	3/2019	Beaver	D2/745
D912,939	S *	3/2021	Misch	D2/745
D945,741	S *	3/2022	Grazi	D2/719
D990,821	S *	7/2023	Zaki	D2/719
2025/0194707	A1 *	6/2025	Graham	A41D 11/00

OTHER PUBLICATIONS

Kindsgard Vintage Snowsuit, posted Oct. 13, 2023 [online]. [retrieved Sep. 14, 2025]. Retrieved from internet, <https://www.amazon.sa/-/>

en/Kindsgard-Vinta-Snowsuit-Mittens-Booties/dp/B0CFXTG76Q (Year: 2023).*

Xifamniy Winter Snowsuit, posted Sep. 15, 2021 [online], [retrieved Sep. 14, 2025]. Retrieved from internet, <https://www.amazon.com/XIFAMNIY-Winter-Snowsuit-Outwear-Toddler/dp/B0B3MDC4RP> (Year: 2021).*

Deux Par Deux Puffy Snowsuit, posting date unavailable [online], [retrieved Sep. 14, 2025]. Retrieved from internet, <https://deuxpardeux.com/en-us/products/one-piece-baby-original-puffy-snowsuit-gray-h10b702-149> (Year: 2025).*

* cited by examiner

Primary Examiner — Ian Simmons

Assistant Examiner — Rose Herzog

(74) *Attorney, Agent, or Firm* — Barry Choobin; Patent 360

(57) **CLAIM**

The ornamental design for a snowsuit, as shown and described.

DESCRIPTION

FIG. 1 is a front view of a first embodiment of a snowsuit, showing my new design;

FIG. 2 is a rear view thereof;

FIG. 3 is front view of a second embodiment of the snowsuit;

FIG. 4 is a rear view thereof;

FIG. 5 is a front view of the snowsuit shown in FIG. 3, in which the gloves of the snowsuit are shown detached; and, FIG. 6 is a rear view thereof.

The even-length broken lines represent stitching and form part of the claimed design.

1 Claim, 6 Drawing Sheets

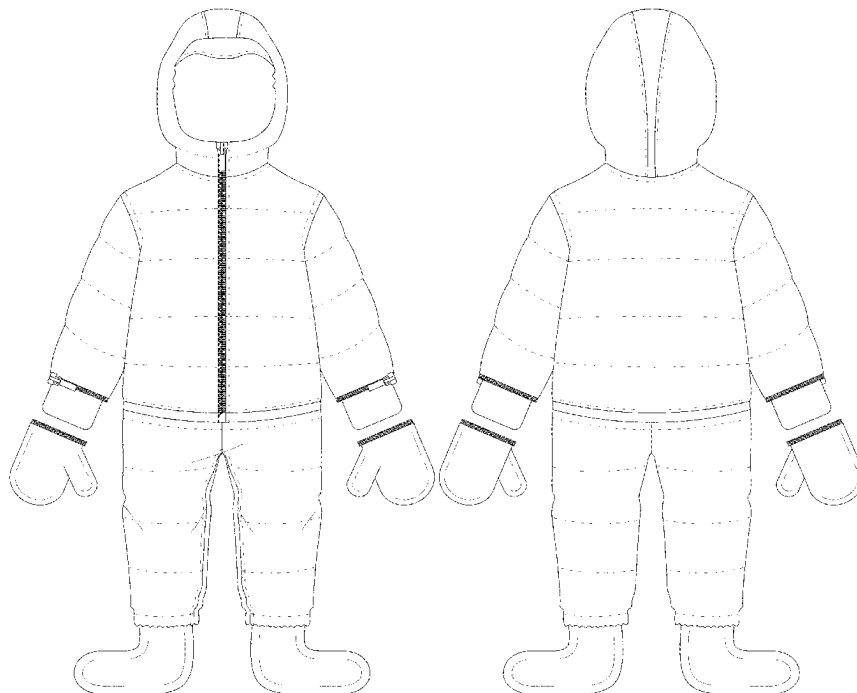




FIG. 1

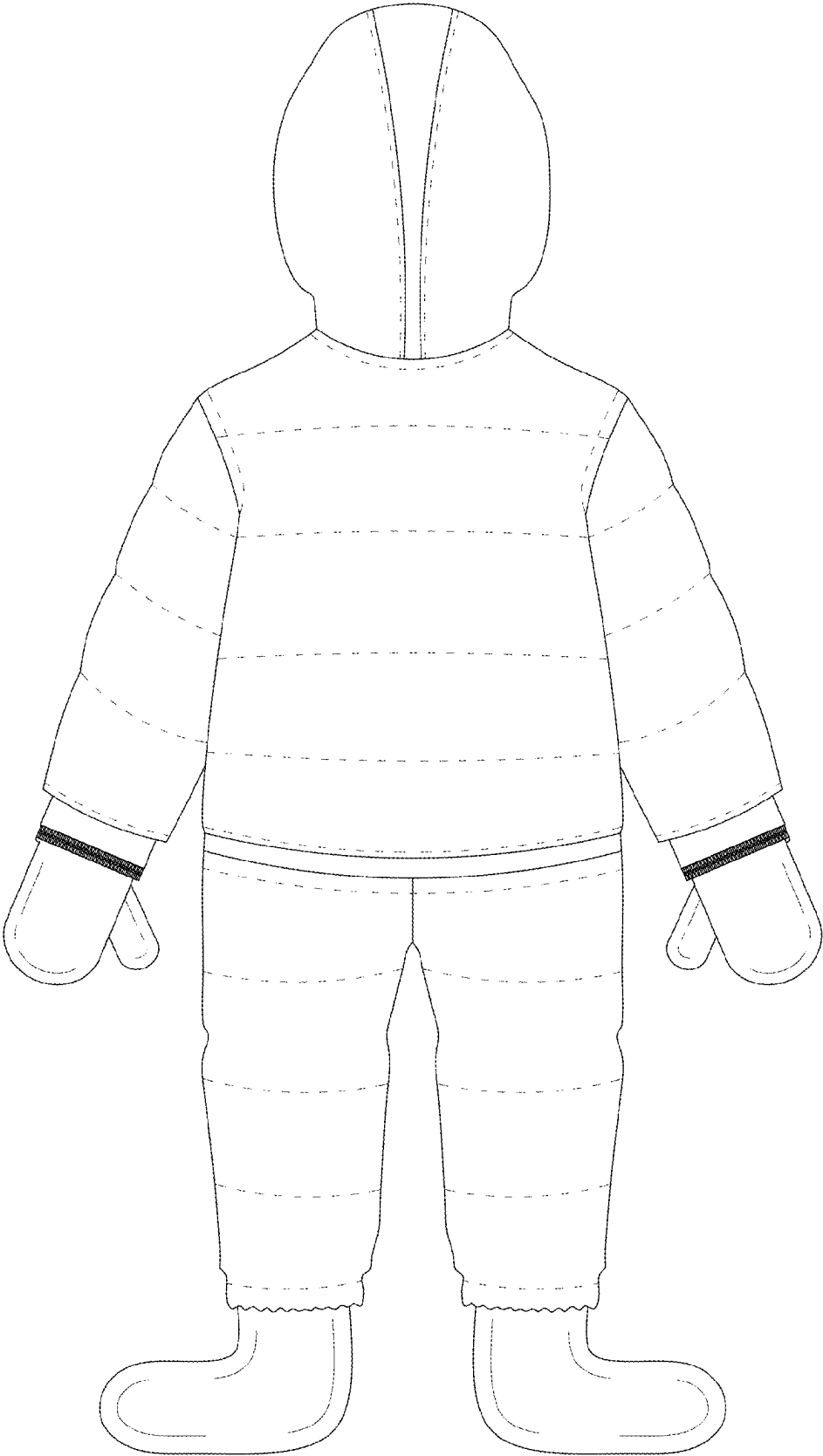


FIG. 2



FIG. 3

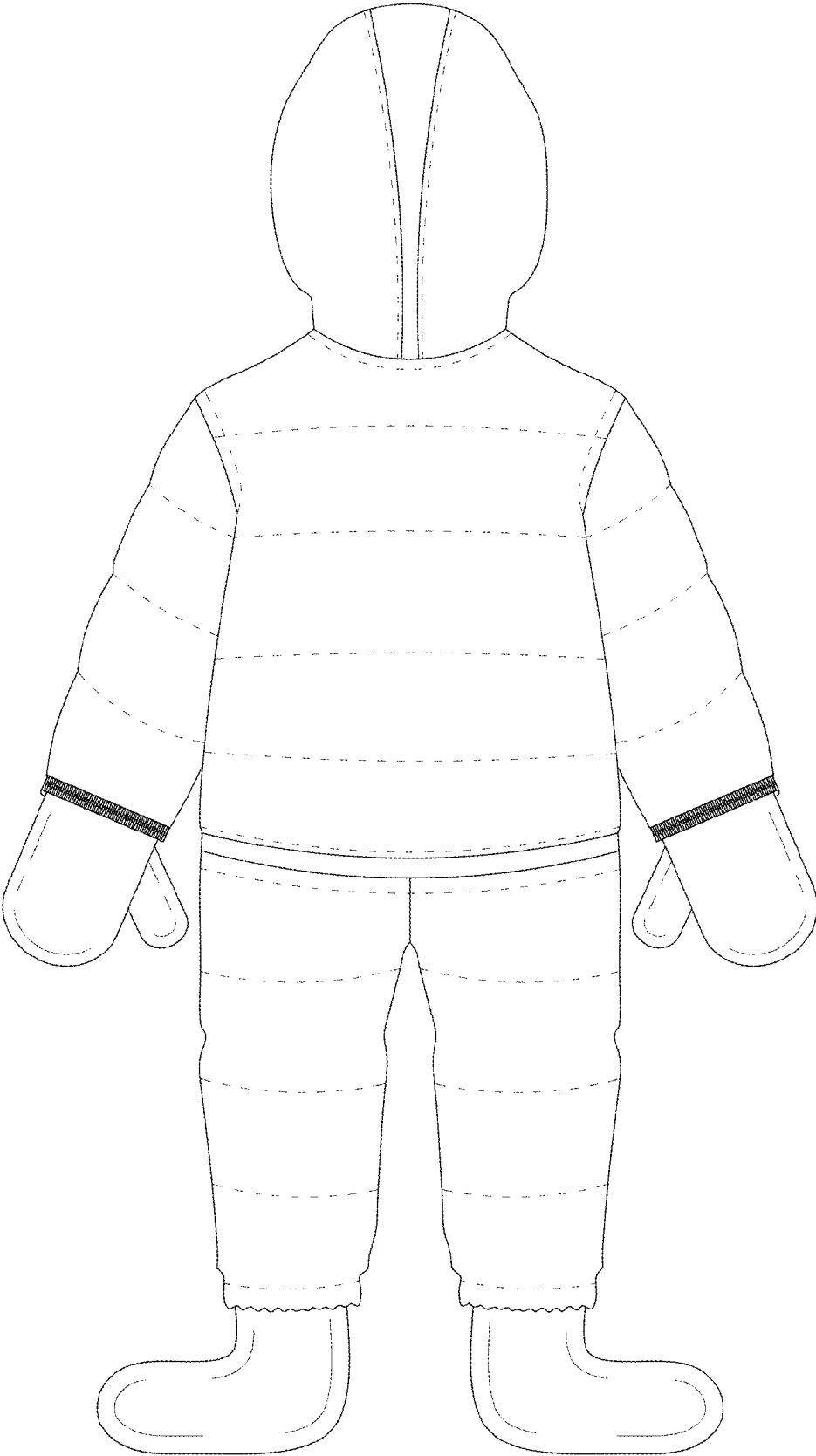


FIG. 4

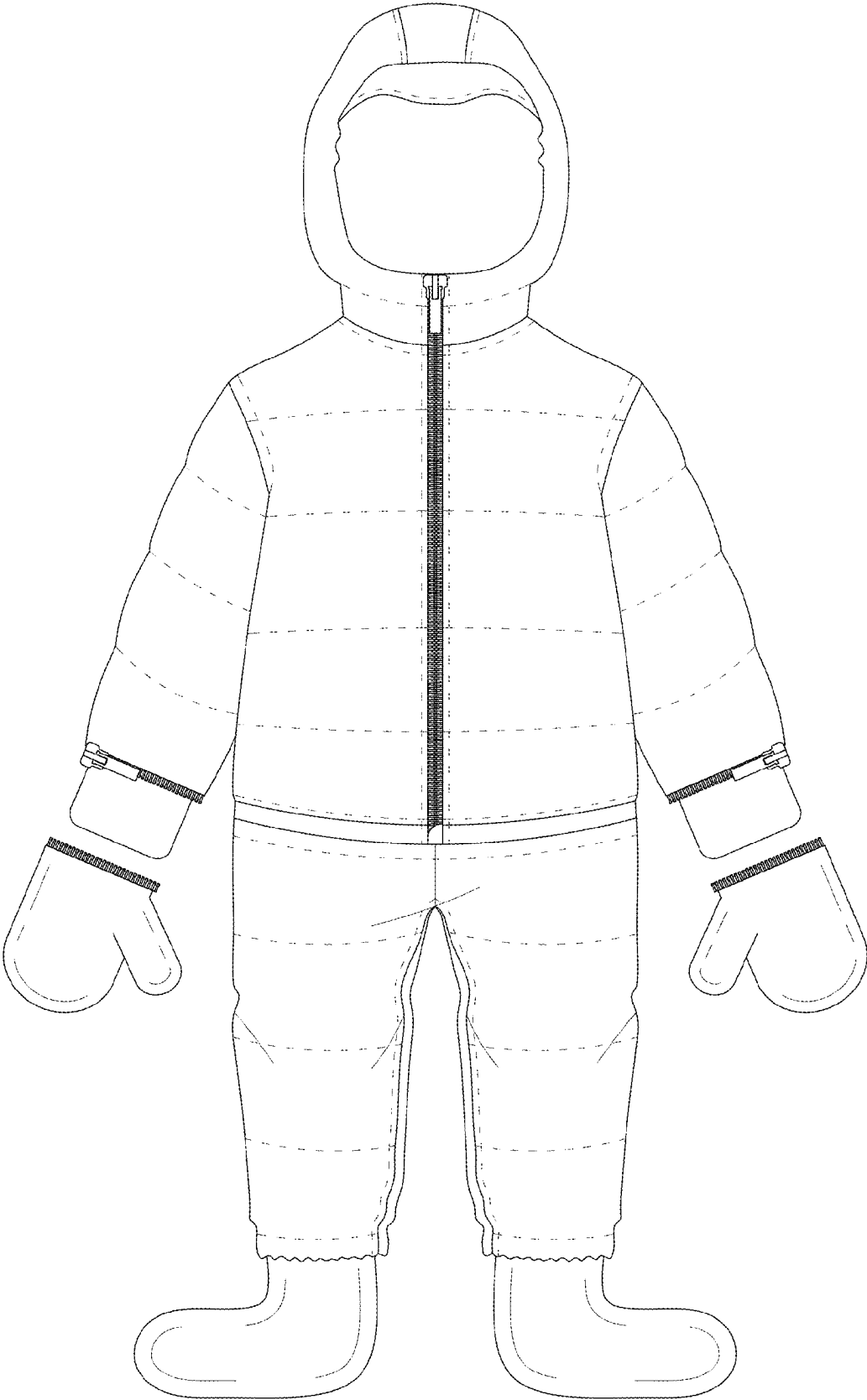


FIG. 5

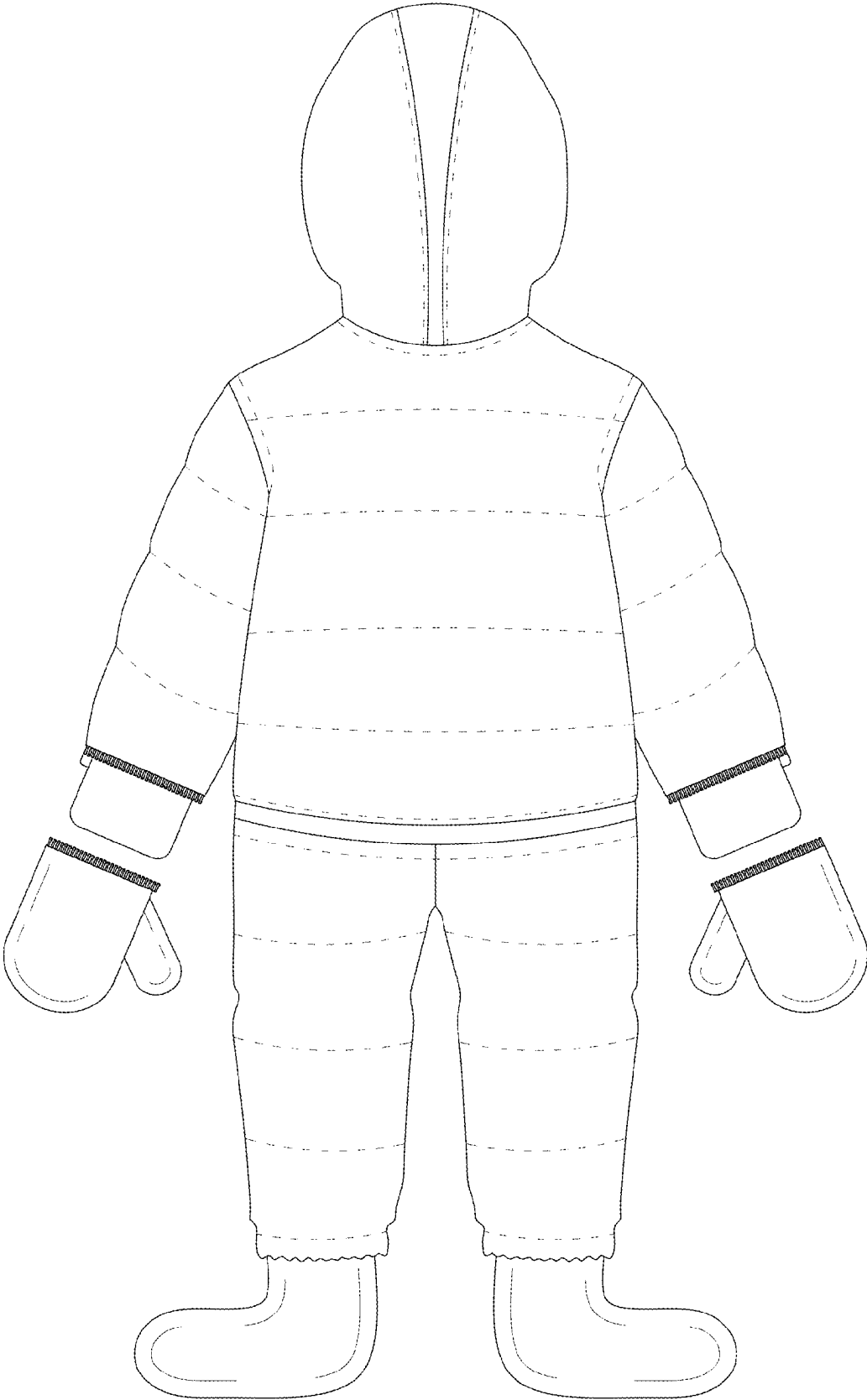


FIG. 6