



US0D1094254S

(12) **United States Design Patent**
Gidwani

(10) **Patent No.:** **US D1,094,254 S**

(45) **Date of Patent:** **** Sep. 23, 2025**

(54) **HATCH TABLE**

(71) Applicant: **Raja M. Gidwani**, Miramar, FL (US)

(72) Inventor: **Raja M. Gidwani**, Miramar, FL (US)

(**) Term: **15 Years**

(21) Appl. No.: **29/918,145**

(22) Filed: **Nov. 24, 2023**

(51) **LOC (15) Cl.** **12-06**

(52) **U.S. Cl.**
USPC **D12/317**

(58) **Field of Classification Search**

USPC D12/300, 317, 318, 400, 404, 425;
D23/370, 238; D7/553.4

CPC B63B 19/12; B63B 19/14; B63B 19/16;
B63B 19/22; A47B 13/16

See application file for complete search history.

(56) **References Cited**

U.S. PATENT DOCUMENTS

D193,697 S * 9/1962 Lo Turco D12/404
D265,154 S * 6/1982 Cox D7/553.4
D273,545 S * 4/1984 Bowman D6/567
D292,511 S * 10/1987 Brown D12/317

D310,508 S * 9/1990 Brown D12/317
D343,823 S * 2/1994 Potter D12/318
D365,873 S * 1/1996 Van Belle D23/370
D979,481 S * 2/2023 Padgett D12/317
D991,134 S * 7/2023 Luciani, Jr. D12/317
2025/0010953 A1 * 1/2025 Gidwani A47B 13/16

* cited by examiner

Primary Examiner — Jerry Shiuan-Hua Hsu
(74) *Attorney, Agent, or Firm* — Barry Choobin; Patent
360

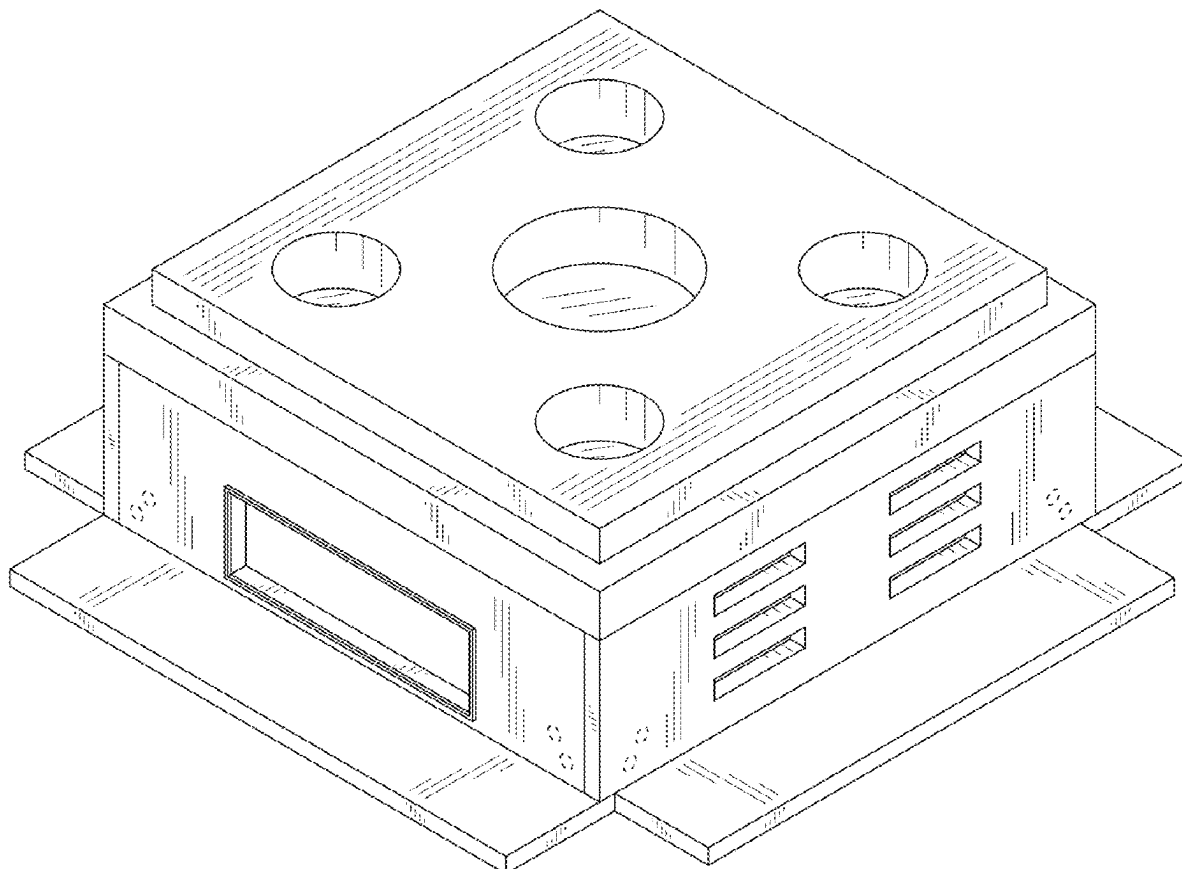
(57) **CLAIM**

The ornamental design for a hatch table, as shown and described.

DESCRIPTION

FIG. 1 is a front, top, right side perspective view of a hatch table, showing my new design;
FIG. 2 is rear, bottom, left side another perspective view thereof;
FIG. 3 is a front view thereof;
FIG. 4 is a rear view thereof;
FIG. 5 is a right side view thereof;
FIG. 6 is a left side view thereof;
FIG. 7 is a top view thereof; and,
FIG. 8 is a bottom view thereof.
The broken lines illustrate portions of the hatch table that form no part of the claimed design.

1 Claim, 4 Drawing Sheets



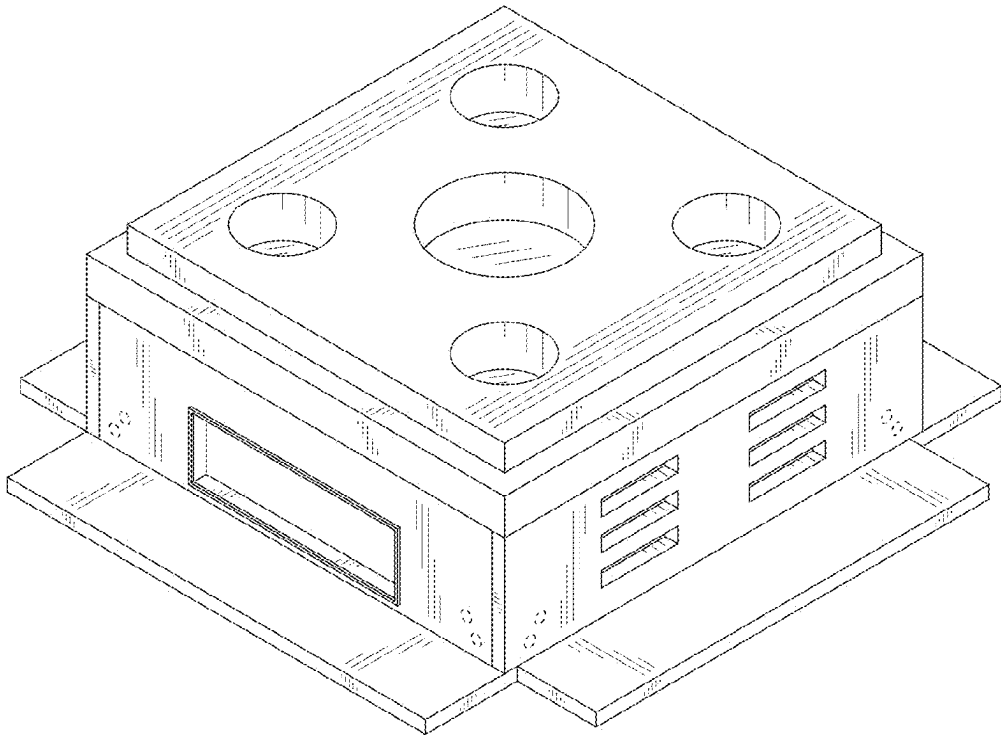


FIG. 1

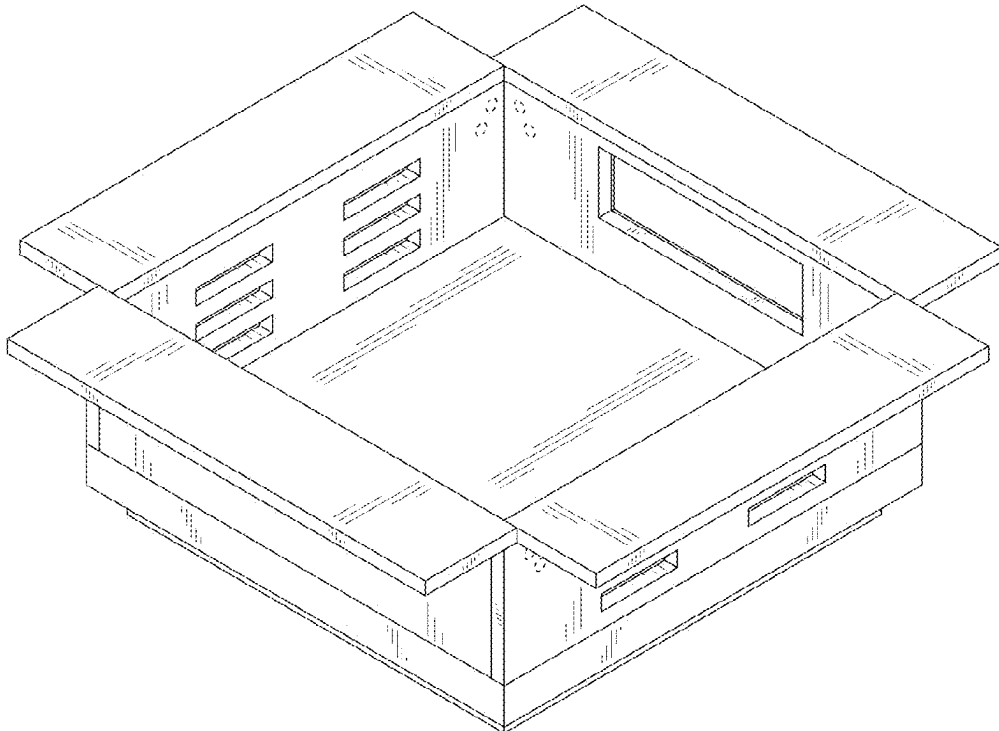


FIG. 2

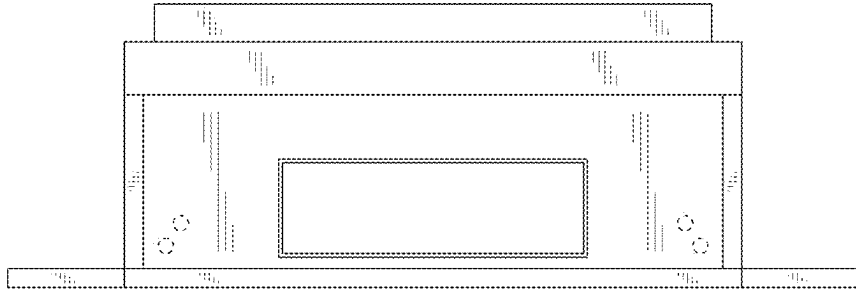


FIG. 3

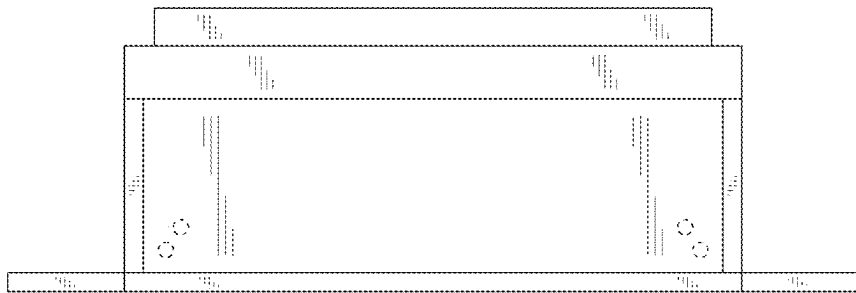


FIG. 4

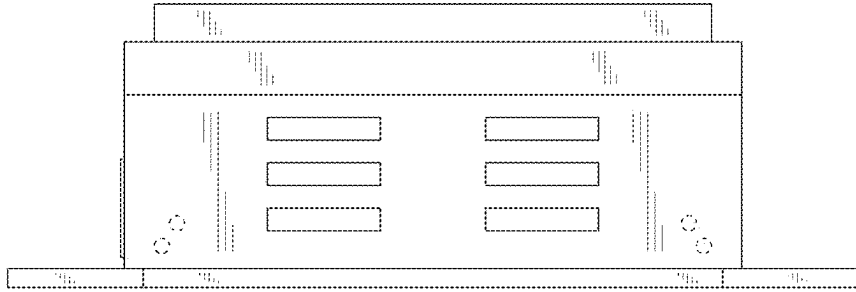


FIG. 5

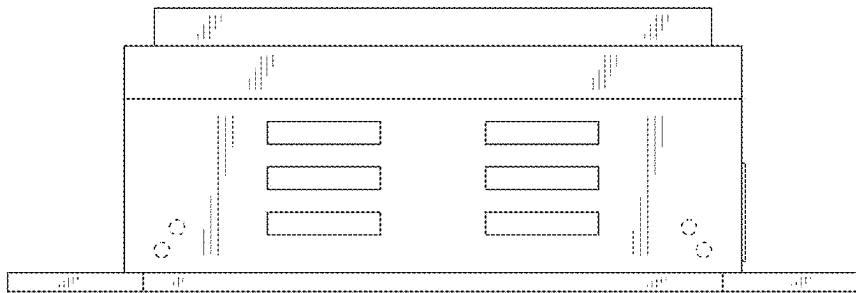


FIG. 6

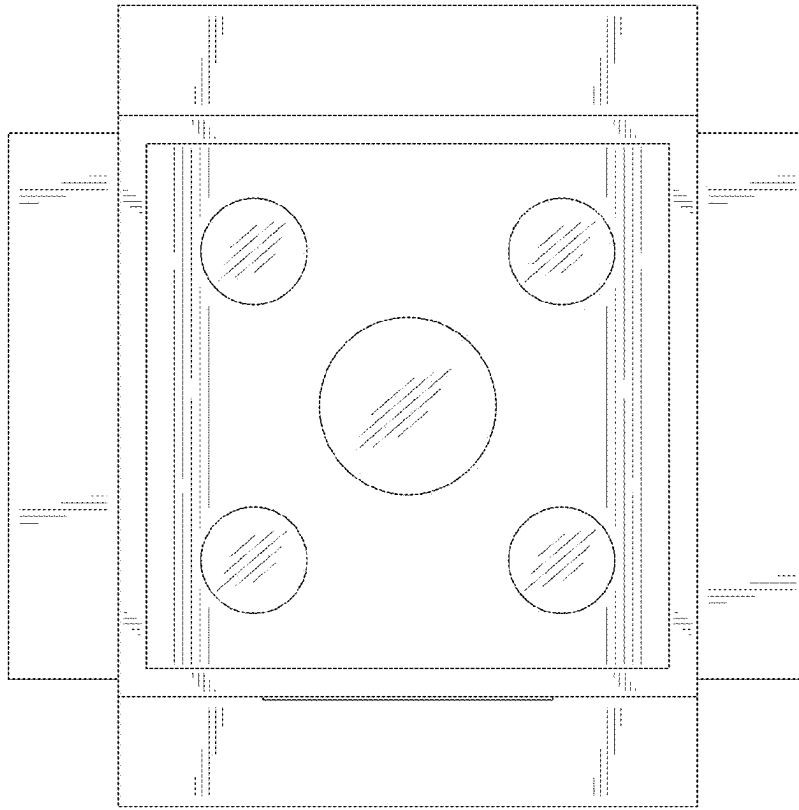


FIG. 7

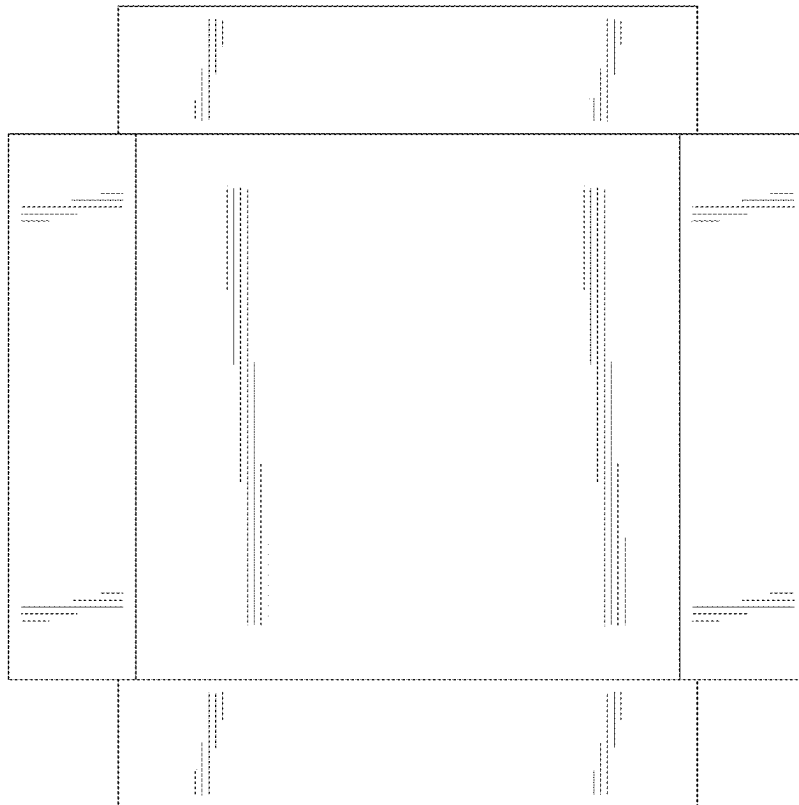


FIG. 8